

# INTRODUCING K2 APPIT FOR SHAREPOINT

**PRESENTED BY:** STEVE BOLDT  
*SENIOR SOLUTION ARCHITECT*  
*STEVEN@K2.COM*

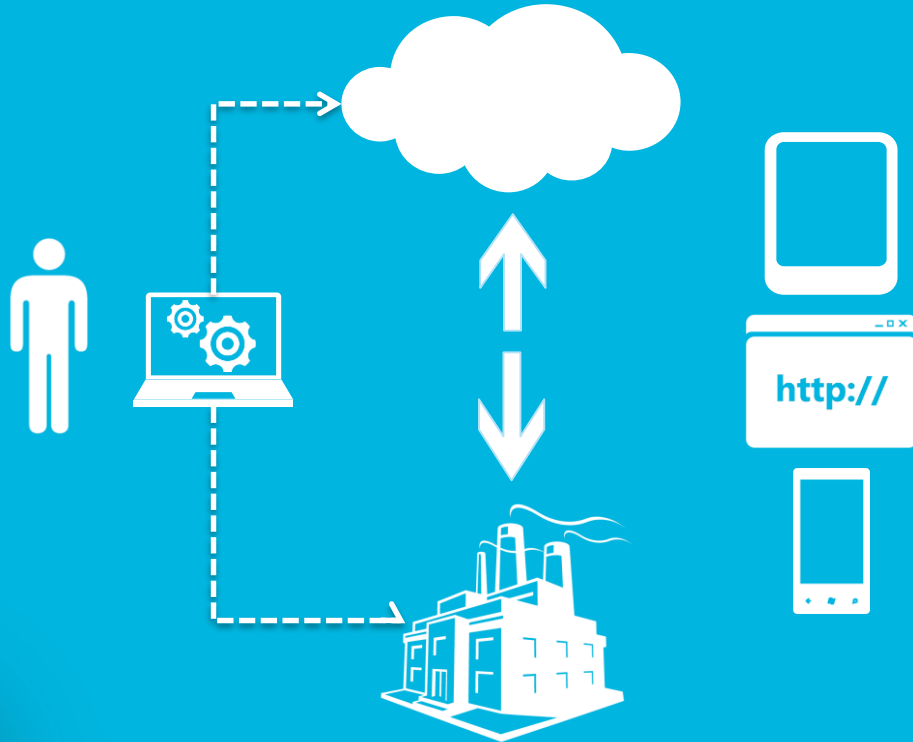


Appit™

Our software empowers customers to build and run business apps with forms, workflow and data that span their people and devices, adapting to their unique requirements.



# EASILY BRIDGE CLOUD AND PEOPLE



Bridge cloud and on-premises easily

Empower more people to solve business problems with apps that include forms, workflows and access to information

Unlock mobile potential inside and outside organizations

# COMMON SHAREPOINT APPS

Workflows and Forms for SharePoint List and Document Items

Workflows and Forms that integrate with SharePoint as a LOB system



Workflow  
in SharePoint



Forms, Workflow, Data  
in SharePoint



Business apps  
using SharePoint data

I want to build **workflows** for SharePoint documents and lists.

I want to build **workflows** and **forms** for SharePoint documents and lists that use line-of-business data.

I want to build **business process apps** or automate processes that originate outside of SharePoint.

# K2 Appit for SharePoint

Cloud-based workflow apps with  
forms and data for SharePoint 2013  
and SharePoint Online



# SEAMLESS HYBRID APPS

On Premises

Cloud



SharePoint 2013



SQL Server



Web service



K2 Appit for SharePoint



SharePoint Online



Exchange Online



Microsoft CRM Online



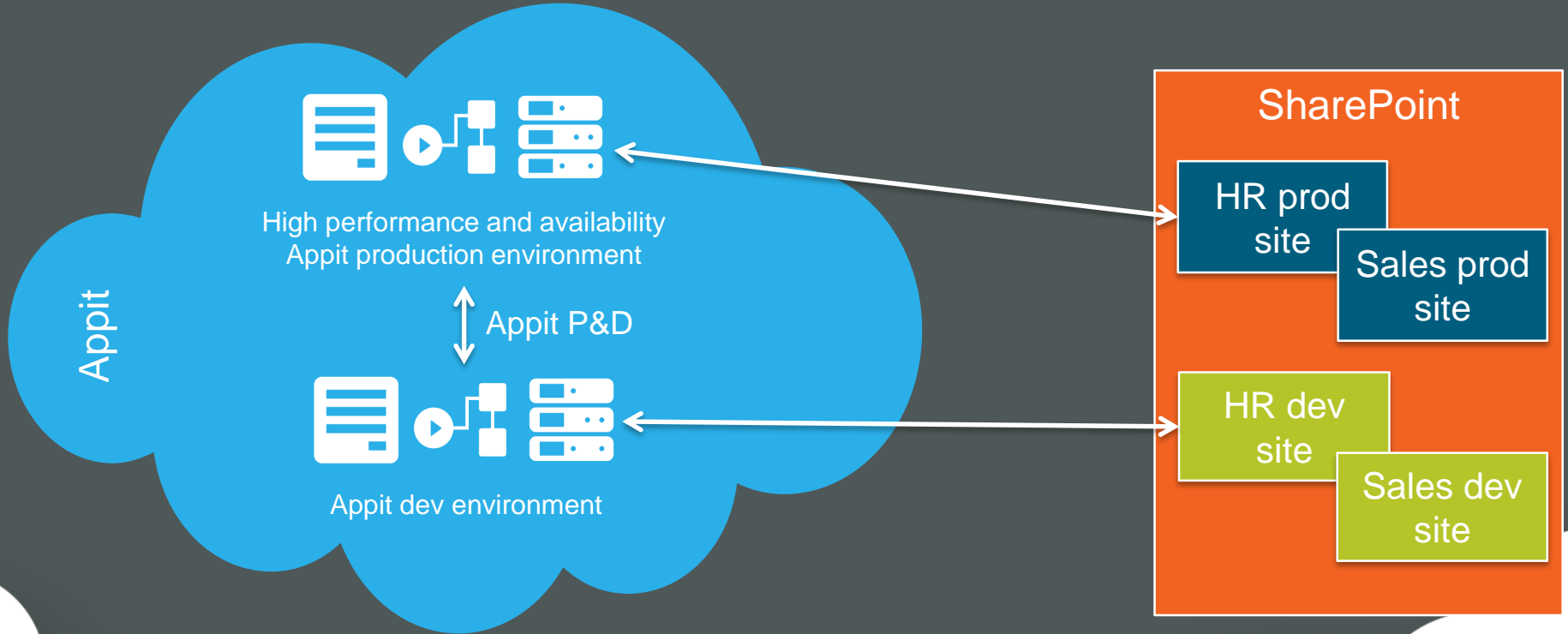
Azure SQL



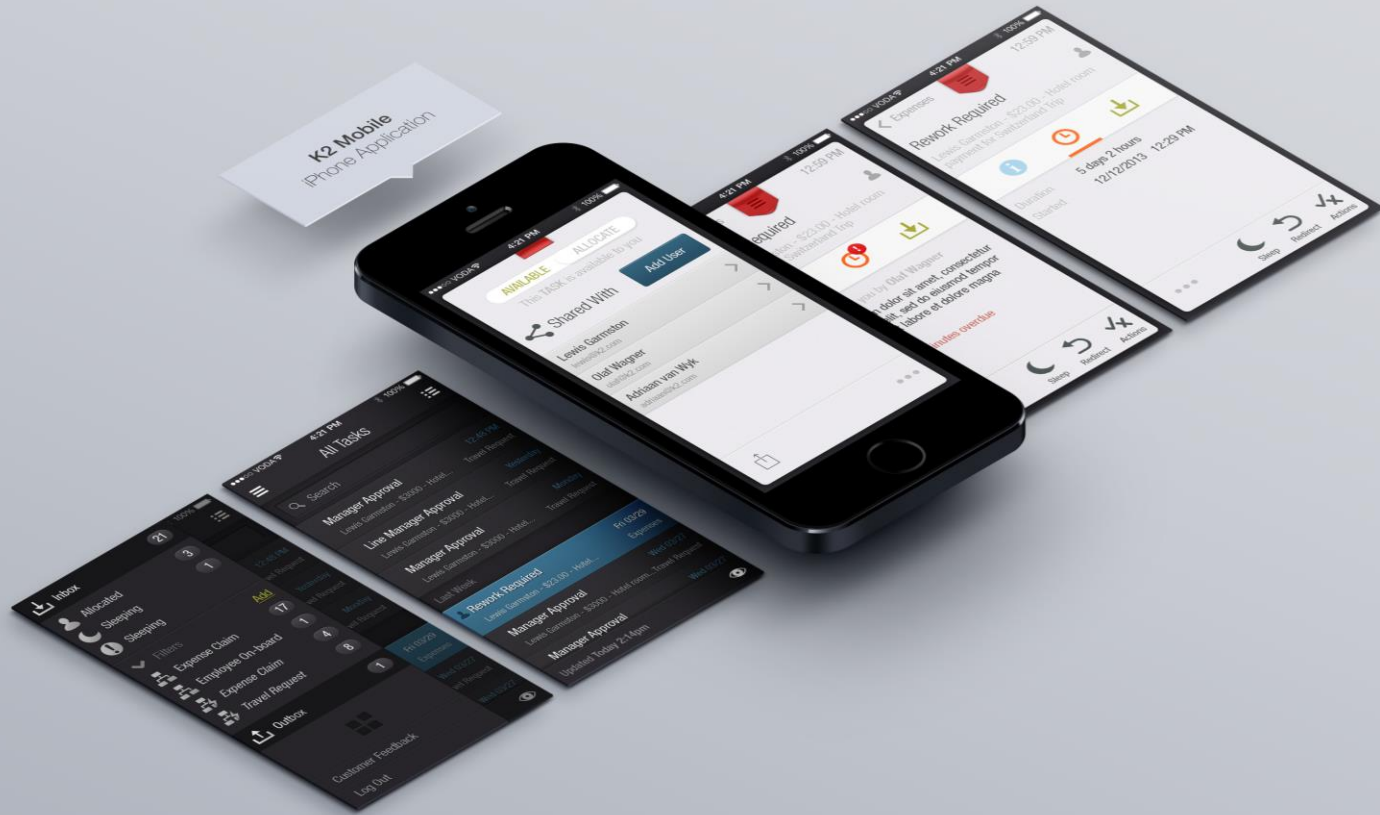
Web Services



# WHAT DO YOU GET?



Your business apps with your data on any device anywhere







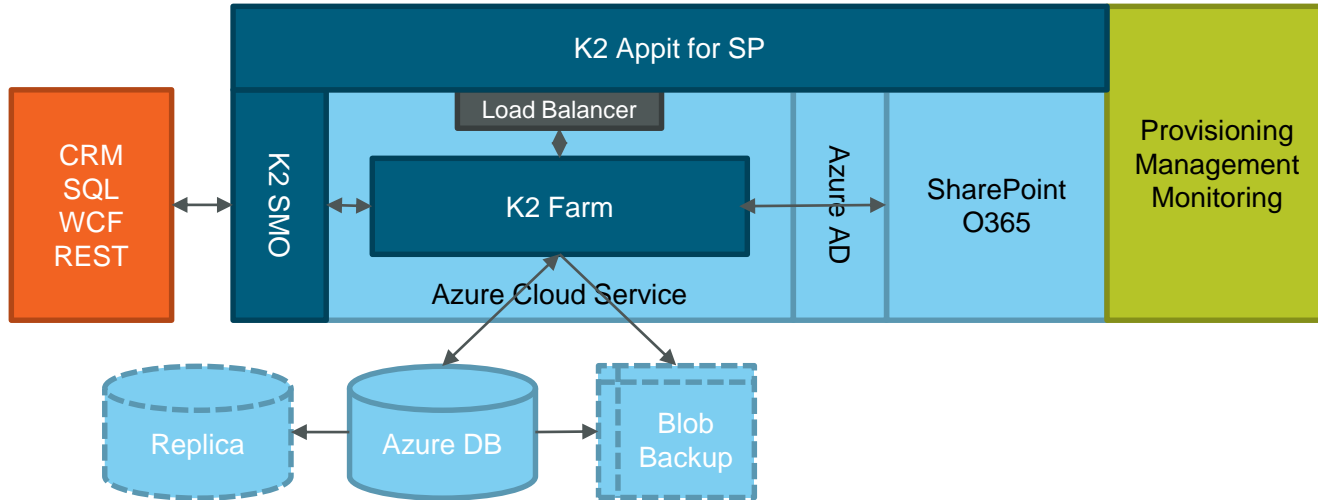
# DEMO

# WHAT DOES IT COST?

- \$500/month for first 100 users, \$2/month for each additional user
- Standard support includes
  - Instructor-led provisioning and onboarding
  - Phone support
  - Access to online help, knowledgebase and community forums
  - Virtual Appit Fundamentals training for up to 3 users
- Additional support and training packages available for purchase

# Q&A

# PER-TENANT ARCHITECTURE



# IDENTITY



- K2 supports all supported SharePoint app identity configurations with a single code base – online, on-premises and hybrid
- **Cloud**
  - Azure AD comes with O365
  - Apps use '3-legged' OAuth
- **On-Premises**
  - Authentication using Azure AD
  - K2 speaks to SP cert-based trust
- **Hybrid**
  - Appit with on-premises SP
  - Authentication using Azure AD
  - Apps use '3-legged' OAuth

